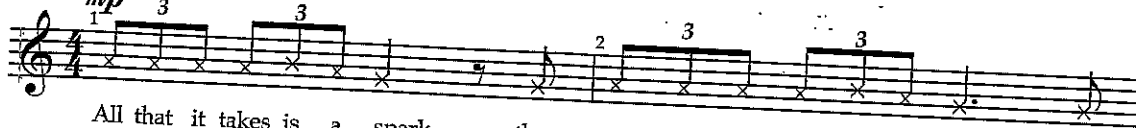


#06 - Jolly Holiday

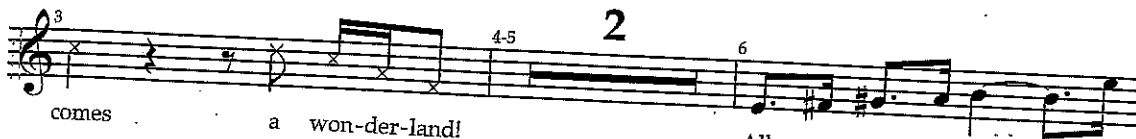
Freely

BERT:

mp



All that it takes is a spark, then some-thing as plain as a park be -



comes a won-der-land! All you 'ave to do is



look a - new, then you'll un - der stand... why

Tempo (♩ = 120)



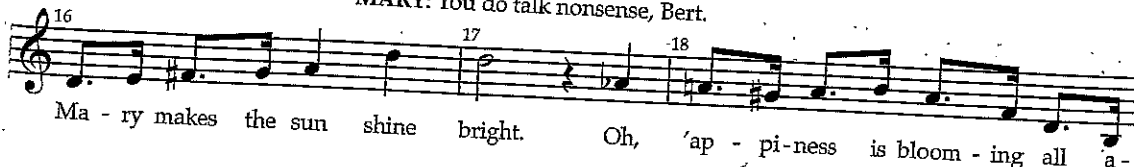
it's a jol - ly hol - i-day with Ma - ry. Ma - ry makes yer heart se

MARY: Oh, really!



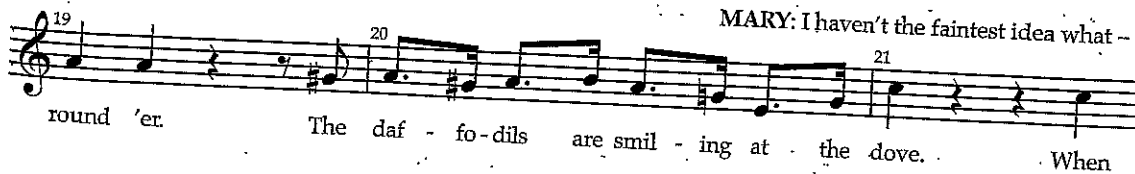
light. When the day is grey and or - di - nar - y,

MARY: You do talk nonsense, Bert.



Ma - ry makes the sun shine bright. Oh, 'ap - pi-ness is bloom - ing all a -

MARY: I haven't the faintest idea what -



round 'er. The daf - fo-dils are smil - ing at - the dove. When

Più mosso



Ma - ry 'olds your 'and, you feel so grand. Your 'eart starts beat - in' like a

MARY: You've enough brass for all of us.

ENS: Shh!



big brass band.

Oh, it's a jol - ly 'ol - i-day with

BERT: Come on, you two.

Poco accel.



Ma - ry. No won - der that it's Ma - ry that we love!

Poco più mosso

JANE, MICHAEL:



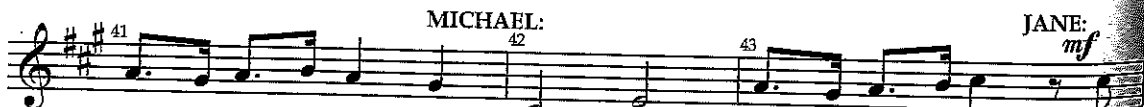
Bor - ing, just like oth - er nan - nies think - ing



parks are good for us. It's just sta - tues, ducks and gran - nies.



I don't un - der - stand all the fuss. Is she



do - ing it to spite us? We could lose her for a lark. Per -



haps it's all a plot. I'll tell you what, she seems so dif - frent but

47 *mp* 48 49
 bet she's not. There is noth - ing to ex-cite us

Meno 50 51 52 [DIALOGUE] *A tempo* 53-55 3
 in the park.

56 *Più mosso* 2 57-58 59-61 *Più mosso* 3 62-64 *Poco a poco rit.* 3

Walk in the park
 BERT: *mp* 65 3 3 66 3 3 NELEUS: *mf* 67
 Ain't it a glo-ri-ous day, right as a morn-in' in May. I feel like I could

68 MARY: 69 70
 fly. Have you ev - er seen the grass so green?

71 72 ENS: *S, A mp* 73 BERT, NELEUS: *mf*
 Or a blu - er sky? Blue, blu - er skyl Oh,
T, B mp
 Blue, blue; blu - er skyl

74 75 BERT: 76
 it's a jo - ly hol - i-day with' Ma - ry. Bet - ter days — I've ne - ver

MARY:
77 78 79

known. You can ask the pas - sing sta - tu - a - ry,

BERT, MARY,
NELEUS, ENSEMBLE: [DIALOGUE]

noth - ing's ev - er set in stone!

noth - ing's ev - er set in stone!

3

BERT:

Each man out with his dog will

MALE ENSEMBLE:

stand a - gog - to see a sta - tue take a gen - tle jog. Oh,

BERT, NELEUS:

Oh,

BERT:

it's a jol - ly hol - i - day with Ma - ry.

BERT:

it's a jol - ly hol - i - day with Ma - ry. No

MARY:

93 It's a jol - ly hol - i-day with
 94 won - der that it's Ma - ry that we love.

95 you, Bert. 96 Gen - tle-men like you are 97 few.

98 Tho' you're just a dia - mond in the rough, Bert. 99

100 un - der neath your blood is blue. 101 You'd ne - ver think of pres - sing your ad -
 102 ENSEMBLE: *p* Your blood is blue!

103 van - tage. 104 Fore - bear - ance is the hall - mark of 105 your creed. A

BERT:

106 la - dy need - n't fear 107 when you are near. 108 Your sweet gen - til - i - ty is

MARY:
+S, A:

109 110 111

crys - tal clear Oh, it's a jol - ly hol - i-day with

ENS: *mp*

It's cry - stal clear!

112 113 114

you, Bert. A jol - ly, jol - ly hol - i-day with you!

T, B:

It's a jol - ly ho - li-day, a jol - ly, jol - ly hol - i-day with you!

Swung

115-116 117 118-125

2 Poco rall. A tempo 8

BERT: Mary. Eh, Mary... MARY: You've only got yourself to blame, Bert.

Poco accel. e cresc poco a poco

126-127 128-129 130-131

2 2 2

Prancing (♩ = 130)

BERT, STATUES:

132 133 134

Let's go for a jaun - ty saun - ter. We are

135 136 137 (Rhymes with "saunter")

bound to make a mark. Looks like all of us were born to

138 139

take a prom - en - ade in the park.

15
B.
Le

159,
light

bounc

161
nar -

all of

164
hap -

With

Soaring 8 7

140-147 148-154 155

Molto rall.

ALL EXCEPT BERT,
NELEUS, STATUES, J, M:

Slightly broader

156 157 158

Oh,
it's a jol - ly hol - i day with Ma - ry. Ma - ry makes your heart so

BERT, NELEUS, STATUES:

8 Let's go for a jaun - ty saun - ter. We are

159 160

light. When the day is grey and or - di -

8 bound to make a mark. Looks like

161 162 163

nar - y, Ma - ry makes the sun shine bright. Oh,

8 all of us were born to take a prom - e - nade in the park.

164 165

hap - pi - ness is bloom - ing all a - round her. The

8 With our fine - ly chis - 'led fea - tures

166 167

daf - fo - dils are smil - ing at the dove. When

8 we can look down from a - bove. When

169 169

Ma - ry holds your hand, you feel so grand. Your

8 Ma - ry holds your hand, you feel so grand. Your

ALL (+JANE, MICHAEL)
EXCEPT BERT, NELEUS, TENORS:

170 171 172 173 *ff*

heart starts beat - ing like a big brass band. Oh,

8 heart starts beat - ing like a big brass band.

174 175

it's a jol - ly hol - i day with Ma - ry. No

BERT, TENORS,
NELEUS:
ff

8 It's no won - der that it's Ma - ry

When

When

Your

Your

TENORS:
Oh,

No

S, A
176
won - der that it's Ma - ry that we love! No
B
176
won - der that it's Ma - ry that we love! No
(BERT, TENORS,
NELEUS)
177
that we love! No

178
won - der that it's Ma - ry that we
178
won - der that it's Ma - ry that we
179
won - der that it's Ma - ry that we

S, A *ff*
180
love!
181
182
183
T, B
love!

#06a - But How

TACET

#06b - A Bit of Imagination

TACET

